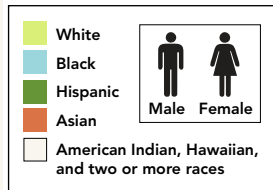
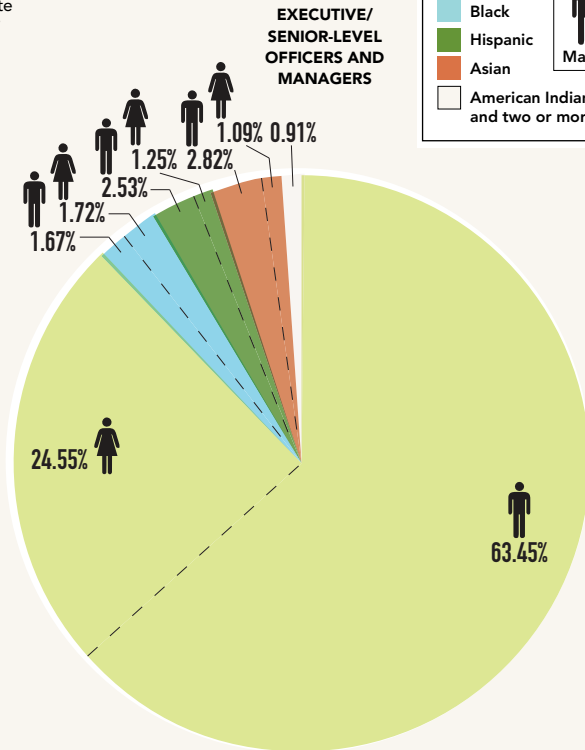
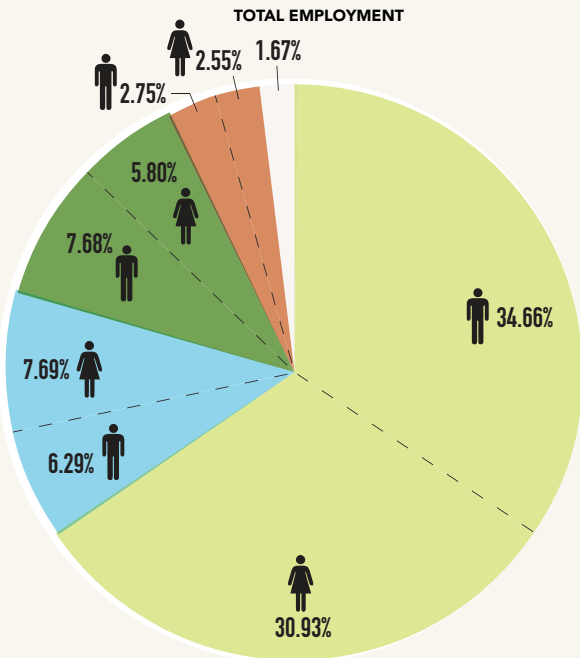


## NATIONAL WORKFORCE COMPOSITION

Racial and gender disparity in hiring and promotions are evident in data produced by the U.S. Bureau of Labor Statistics and other statistical sources. White employees account for nearly two-thirds of total employment numbers. Nearly 90 percent of executive/senior-level officers and managers are white, with white males continuing to dramatically outnumber minorities and women in all other management groups, according to the U.S. Equal Employment Opportunity Commission.



Note: EEO-1 National Aggregate Report 2008 data  
 Source: U.S. Equal Employment Opportunity Commission ([www.eeoc.gov](http://www.eeoc.gov))